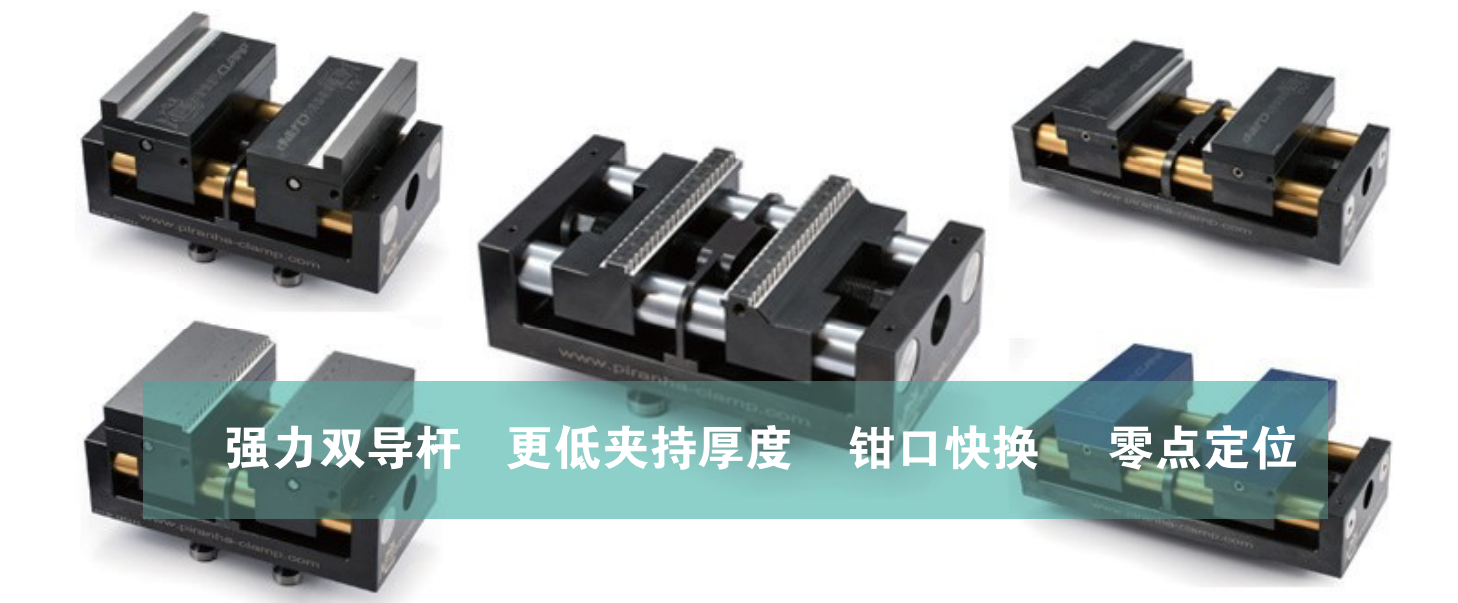


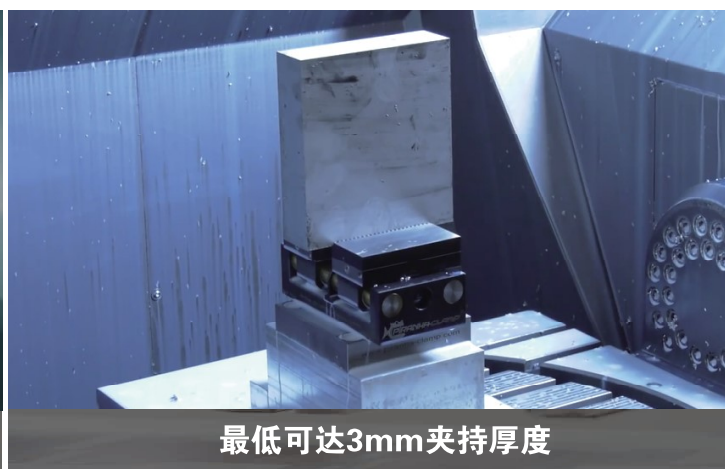
## 自定心精密虎钳 零点定位快换



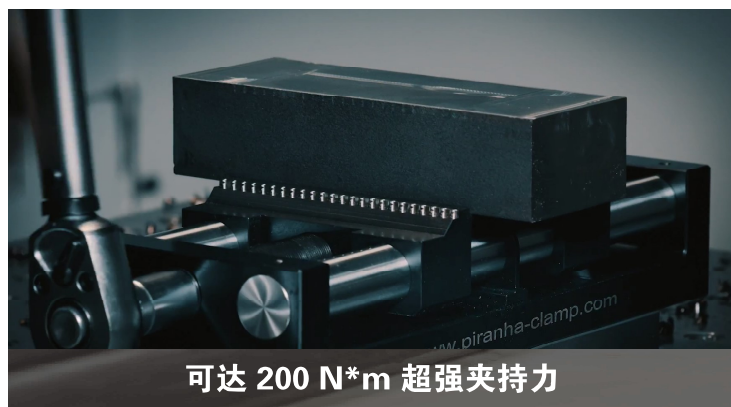
强力双导杆 更低夹持厚度 钳口快换 零点定位



强力双导杆，敞开式结构设计便于清理



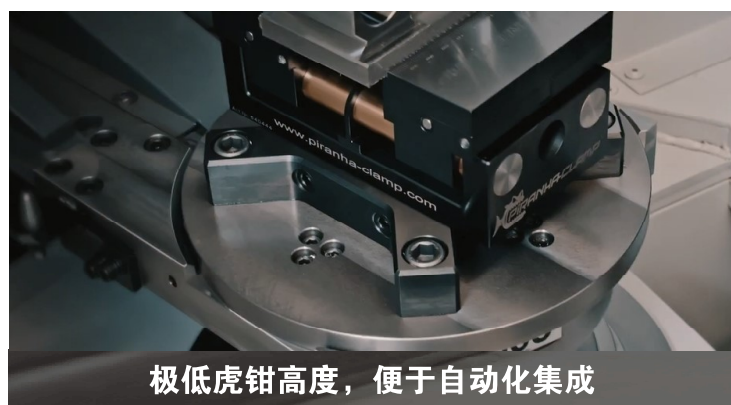
最低可达3mm夹持厚度



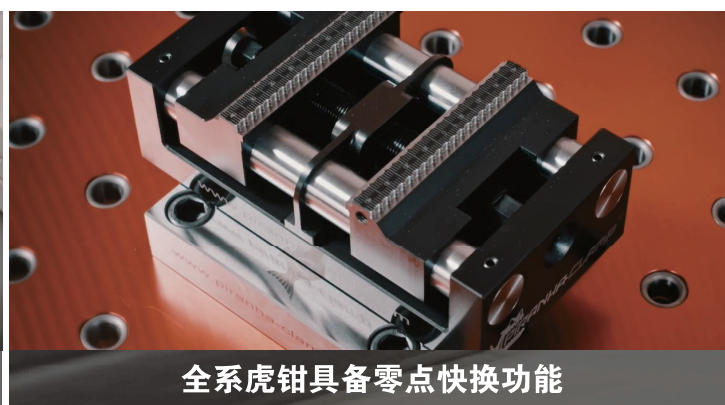
可达 200 N\*m 超强夹持力



钳口秒速快换，一台虎钳可满足不同工序要求



极低虎钳高度，便于自动化集成



全系虎钳具备零点快换功能



Highest clamping force due to the gliding bars



No pre-clamping



Best quality and accuracy



Minimum material loss due to 3 mm clamping depth



Lowest construction height



Open construction for quick cleaning



High repetition accuracy 0.01 mm



Hardened functional surface



EMPA tested spindle on tension for extreme clamping forces 1350 Nm



100% Swiss made

The patented

**PIRANHA CLAMP  
CENTERING VISE**

solve all clamp problems on  
chip-removing processing

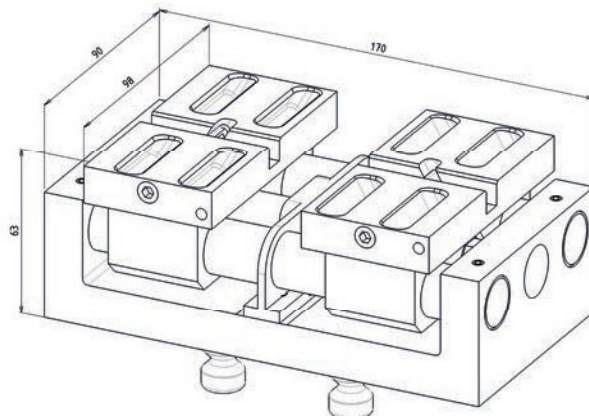


## Centering vise – Gepard 170

The ultimate quick-change-system for high end machining

Art. 540444

Gepard 170 incl. clamping jaws Alu S 170  
170 x 90 x 64 mm – 5.70 kg



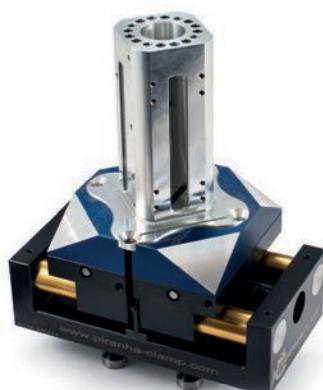
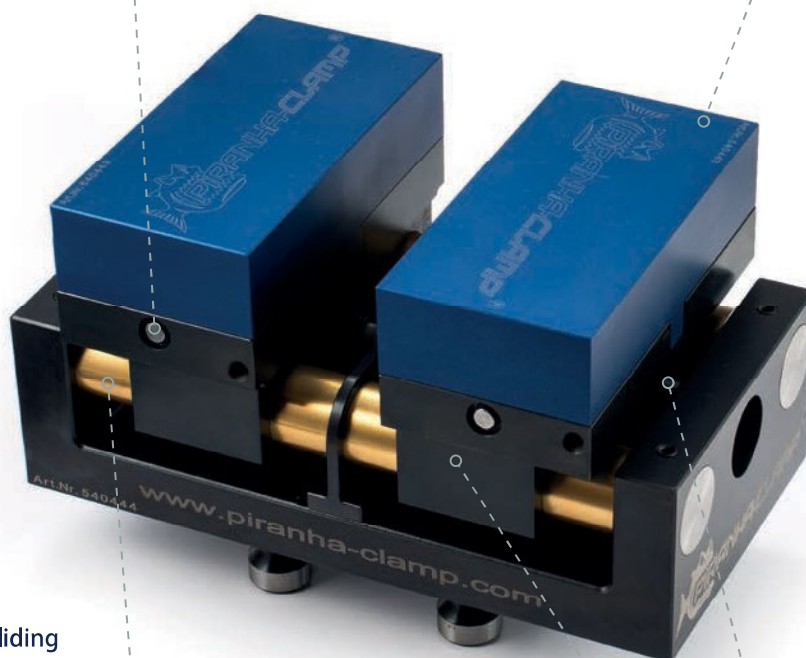
Eccentric pin for clamping jaws  
change within seconds

Alu jaws for individual clamping

Hardened and coated gliding  
bars for more precision

Thermally treated spindle  
for high pressure

High-precision base jaw for  
repetition accuracy 0.01 mm



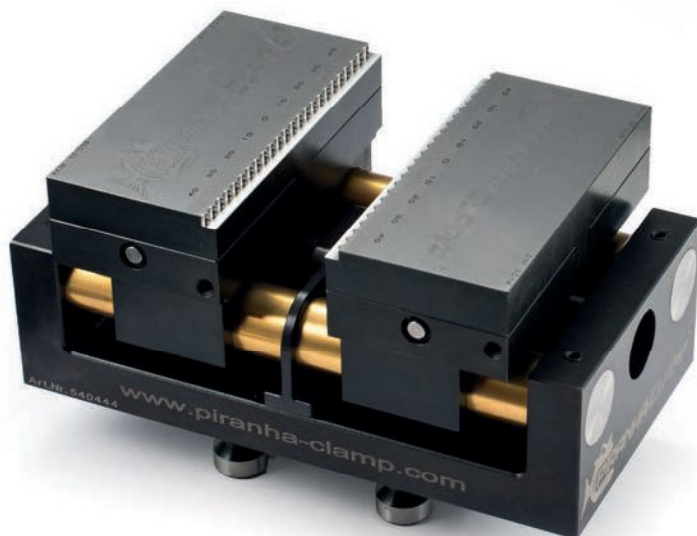
Example: Complex 5-axis part with contour clamping on alu clamping jaws

## Examples with different clamping jaws



Gepard 170 with clamping jaws Top long

Gepard 170 with clamping jaws Snapper short



Gepard 170 with clamping jaws Snapper long

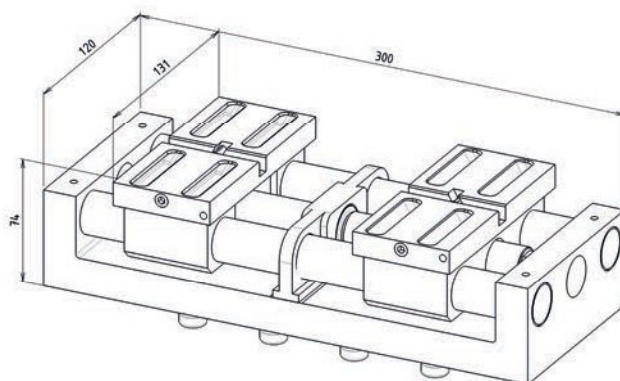


## Centering vise – Gepard 300

The ultimate quick-change-system for high end machining

Art. 540400

Gepard 300 incl. clamping jaws Alu S 300  
300 x 120 x 74 mm / 14.30 kg



One clamp for raw parts  
to finished parts



Example: Hardened part with contour clamping on steel clamping jaws

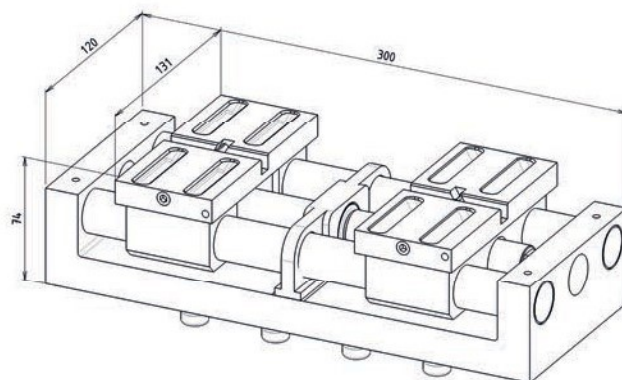


## Centering vise – Gepard 300

The ultimate quick-change-system for high end machining

Art. 540400

Gepard 300 incl. clamping jaws Alu S 300  
300 x 120 x 74 mm / 14.30 kg



One clamp for raw parts  
to finished parts



Example: Hardened part with contour clamping on steel clamping jaws

## Clamping jaws to

## Gepard 170

## Gepard 300



Art. 540443

Set clamping jaws Alu S (170)  
50 x 98 x 31 mm / 0.80 kg  
clamping range 0-160 mm

Art. 540424

Set clamping jaws Alu S (300)  
60 x 131 x 41 mm / 1.60 kg  
clamping range 0 - 250 mm



Art. 551018

Set clamping jaws Alu M (170)  
50 x 98 x 41 mm / 1.00 kg  
clamping range 0 - 160 mm

Art. 551020

Set clamping jaws Alu M (300)  
60 x 131 x 51 mm / 2.10 kg  
clamping range 0 - 250 mm



Art. 551019

Set clamping jaws Alu L (170)  
50 x 98 x 51 mm / 1.20 kg  
clamping range 0 - 160 mm

Art. 551021

Set clamping jaws Alu L (300)  
60 x 131 x 61 mm / 2.60 kg  
clamping range 0 - 250 mm



Art. 551039

Set clamping jaws soft steel S (170)  
50 x 98 x 31 mm / 1.85 kg  
clamping range 0 - 160 mm

Art. 551045

Set clamping jaws soft steel S (300)  
60 x 131 x 41 mm / 3.50 kg  
clamping range 0 - 250 mm



Art. 551033

Set clamping jaws soft steel M (170)  
50 x 98 x 41 mm / 2.60 kg  
clamping range 0-160 mm

Art. 551046

Set clamping jaws soft steel M (300)  
60 x 131 x 51 mm / 5.00 kg  
clamping range 0 - 250 mm



Art. 551042

Set clamping jaws soft steel L (170)  
50 x 98 x 51 mm / 3.40 kg  
clamping range 0-160 mm

Art. 551047

Set clamping jaws soft steel L (300)  
60 x 131 x 61 mm / 6.80 kg  
clamping range 0 - 250 mm



## Gepard 170



Art. 551009

Set clamping jaws Snapper short (170)  
50 x 98 x 22 mm / 1.10 kg  
clamping range 7 - 71 mm

## Gepard 300

Art. 551007

Set clamping jaws Snapper short (300)  
60 x 131 x 22 mm / 1.80 kg  
clamping range 7 - 154 mm



Art. 551008

Set clamping jaws Snapper long (170)  
50 x 98 x 22 mm / 0.90 kg  
clamping range 81 - 145 mm

Art. 551006

Set clamping jaws Snapper long (300)  
60 x 131 x 22 mm / 1.50 kg  
clamping range 101 - 248 mm



Art. 551005

Set clamping jaws Top short (170)  
50 x 98 x 25 mm / 1.30 kg  
clamping range 17 - 81 mm

Art. 551003

Set clamping jaws Top short (300)  
60 x 131 x 25 mm / 2.15 kg  
clamping range 17 - 164 mm



Art. 551004

Set clamping jaws Top long (170)  
50 x 98 x 25 mm / 0.85 kg  
clamping range 81 - 145 mm

Art. 551002

Set clamping jaws Top long (300)  
60 x 131 x 25 mm / 1.30 kg  
clamping range 101 - 248 mm



Art. 551032

Set clamping jaws high (170)  
50 x 98 x 40 mm / 1.40 kg  
Spannbereich / clamping range  
71 - 135 mm 81 - 145 mm

Art. 551038

Set clamping jaws high (300)  
60 x 131 x 50 mm / 1.80 kg  
Spannbereich / clamping range  
91 - 238 mm 101 - 248 mm

## Centering vise Snapper 170

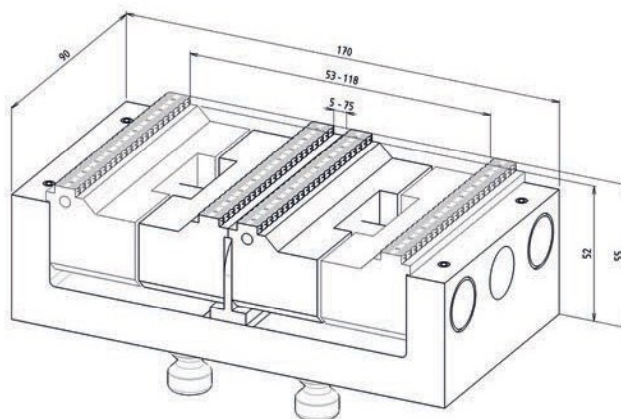
The most biting of its kind for raw part machining

Art. 540362

Centering vise Snapper 170  
170 x 90 x 55 mm – 4.50 kg

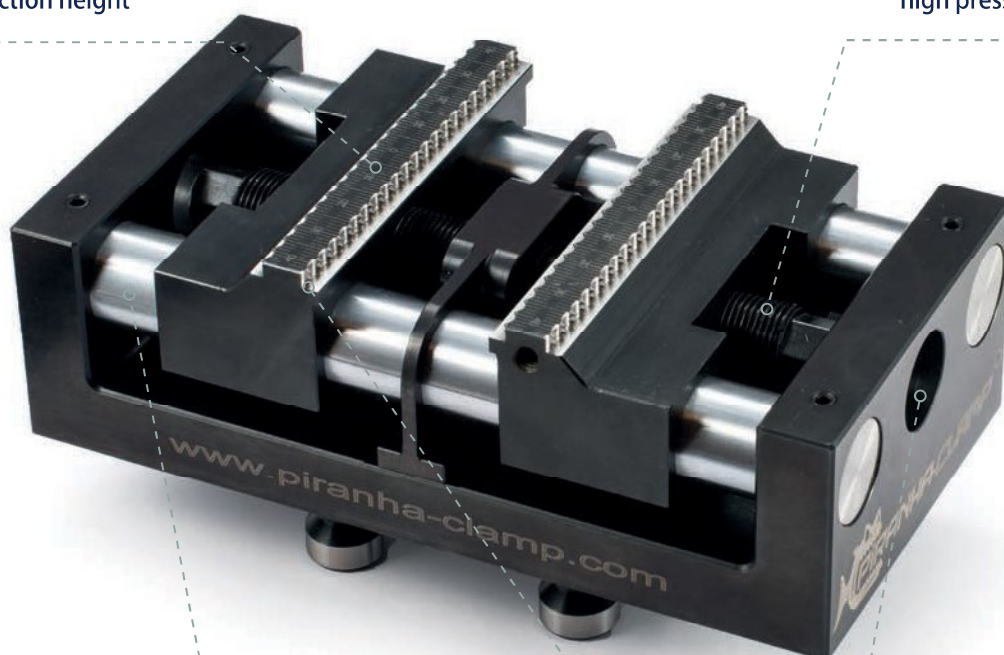
Art. 540446

Centering vise Snapper 170 with higher jaws (+10 mm)  
170 x 90 x 65 mm – 4.60 kg



Lowest construction height

Thermally treated spindle for high pressure



Hardened and coated gliding bars for more precision

Torquing range for clamping pressure up to 200 Nm

Two rows of teeth for form and force closure with pull-down effect on 3 mm



Example: 5-side machining with raw part clamping

## Centering vise Snapper 300

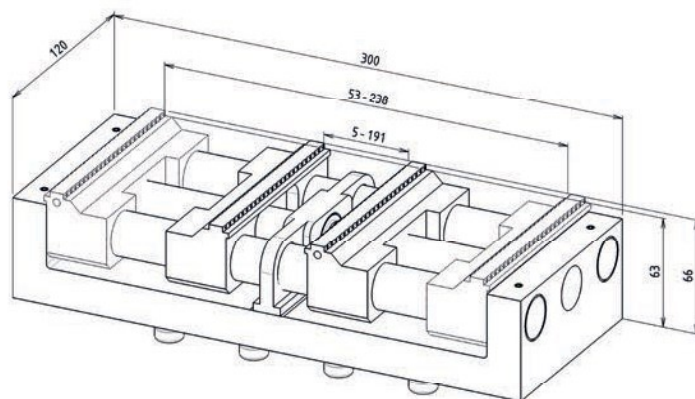
The most biting of its kind for raw part machining

Art. 540401

Centering vise Snapper 300  
300 x 120 x 66 mm – 11.50 kg

Art. 540447

Centering vise Snapper 300 with higher jaws (+10 mm)  
300 x 120 x 76 mm – 11.60 kg



For raw part clamping  
without pre-clamping



Example: Plates machining with minimum material loss

## Zero-point clamping plates

For the optimal interface to the machine

Art. 540276

Zero-point clamping plate for distance plates  
100 x 100 x 26 mm / 1.70 kg



Art. 540415

Zero-point clamping plate grid 40 mm  
120 x 120 x 26 mm / 2.40 kg



Art. 551022

Zero-point clamping plate grid 50 mm  
125 x 125 x 26 mm / 2.65 kg



Art. 551024

Double zero-point clamping plate grid 40 mm  
230 x 120 x 26 mm / 4.30 kg



Art. 551023

Double zero-point clamping plate grid 50 mm  
250 x 100 x 26 mm / 4.00 kg



Art. 540283

Zero-point clamping plate Butterfly  
für CNC round table  
170 x 170 x 26 mm / 2.50 kg



## Spacer

For the elevated construction

Art. 551035

Spacer Alu grid 40 mm  
120 x 120 x 74 mm / 3.00 kg



Art. 551037

Spacer steel grid 40 mm  
120 x 120 x 74 mm / 8.30 kg



Art. 551040

Double spacer Alu grid 40 mm  
230x120x74 mm / 4.5 kg



Art. 551041

Double spacer steel grid 40 mm  
230x120x74 mm / 13 kg



Art. 551043

Double spacer Alu grid 50 mm  
250 x 100 x 74 mm / 4.7 kg



Art. 551044

Double spacer steel grid 50 mm  
250 x 100 x 74 mm / 15 kg





## Accessories

Art. 540277

Bolt for zero-point clamping plates  
15 x 15 x 34 mm / 0.10 kg



Art. 551025

Plug for zero-point clamping plates  
18 x 18 x 25 mm / 0.10 kg



## Customized products

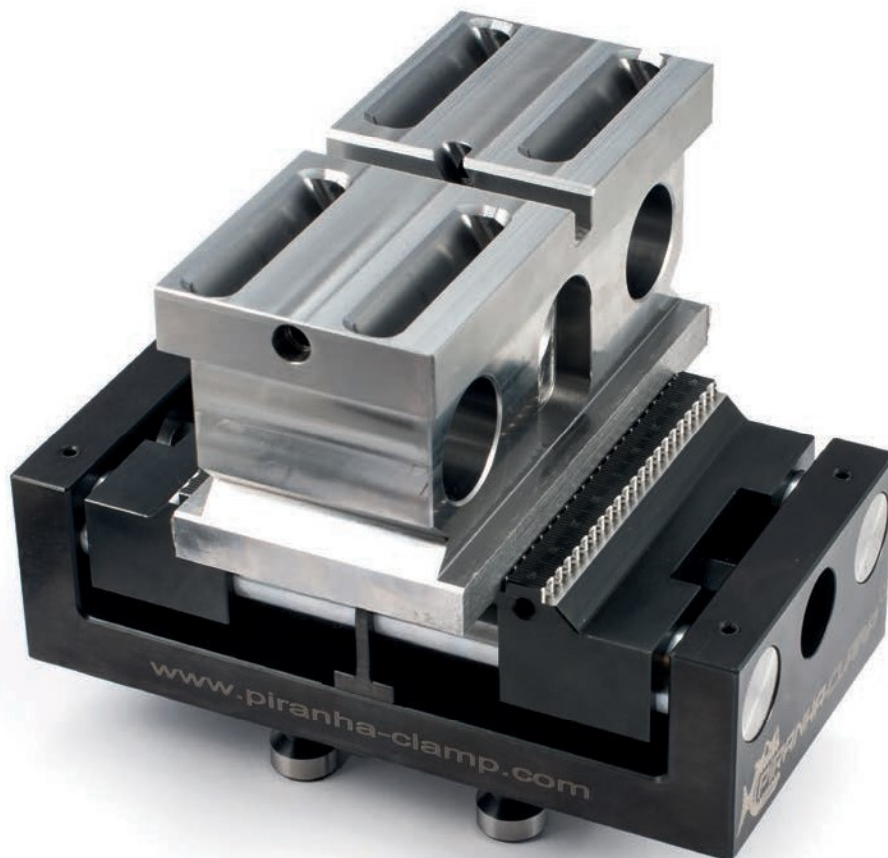
On request we produce:

Clamping jaws

Zero-point clamping plates

Spacer

grid plates



**中国区代理**

**亦斐工业技术（上海）有限公司**

**021-59963732 / 137 6107 5639**

**上海市嘉定区嘉罗公路336号科创大厦1317室**

**sales@ea-fi.com**

**www.ea-fi.com**